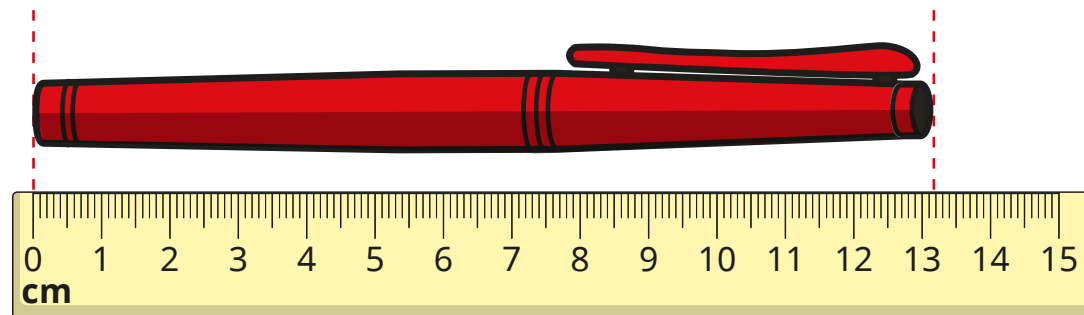
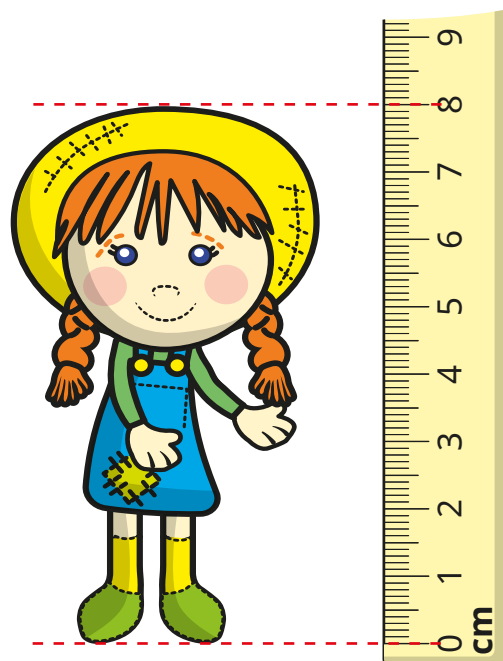


Measure in centimetres

1 How long is the pen to the nearest centimetre?

 cm

2 How tall is the doll?

 cm

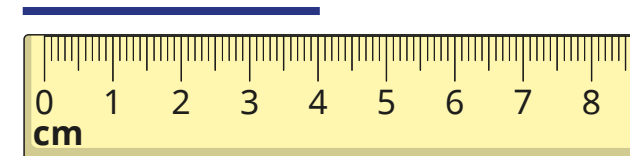
3 Use a ruler to draw the lines.

a) 12 cm long

b) 7 cm long

c) 8 cm long

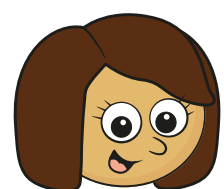
4 Mo is measuring the length of the line.



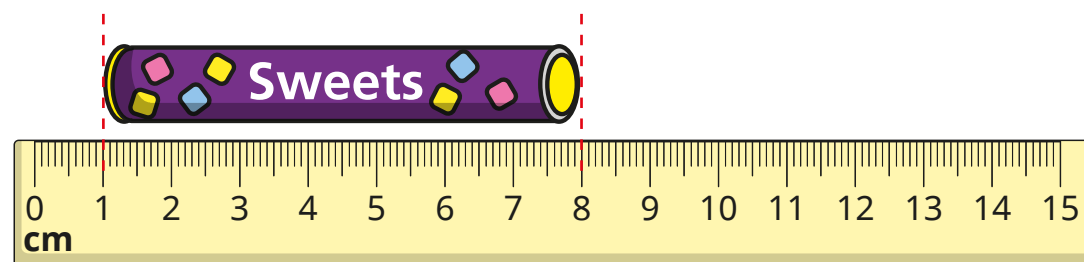
The line is
4 cm long.

What mistake has Mo made?

- 5 Kim measures the length of a tube of sweets.



The tube is
8 cm long.



- a) Do you agree with Kim? _____

Talk about it with a partner.

- b) How long is the tube?

cm

- 6 You cannot use a ruler to measure the line.



Why not?

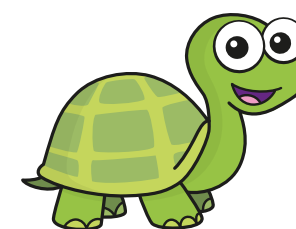
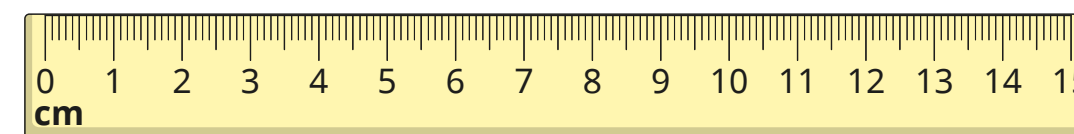
How could you measure it?

- 7 a) Draw a line that is between 6 cm and 9 cm long.

- b) How long is your line to the nearest centimetre?

cm

- 8 Tiny has a 15 cm ruler.



I cannot measure
anything that is longer
than 15 cm.

Is Tiny correct? _____

How could Tiny measure an object longer
than 15 cm?

Talk to a partner.