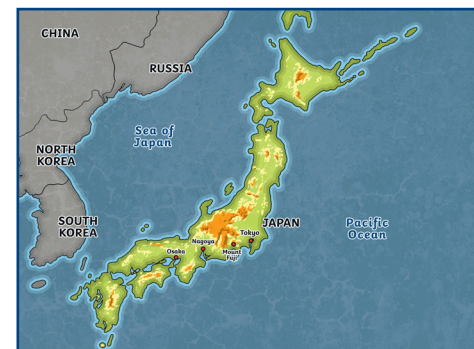




Tokyo is the capital of Japan, which is on the eastern edge of the continent of Asia. Japan is made up of a collection of 14,125 islands with four main islands: Honshu, Hokkaido, Kyushu and Shikoku.

Where Is Tokyo?

Tokyo is on the island of Honshu at the head of Tokyo Bay. It is Japan's largest city with a population of around 14 million. The city was named Tokyo (meaning eastern capital) in 1868.



What Is Life like in Tokyo?

Tokyo is a leading city in the world because of its work in electronics, information technology, publishing and broadcasting. It is well known for making vehicles and electrical goods. Its currency is the Japanese yen.

Tokyo relies on its transport system of trains, subways and buses because of its large population. The busiest station in the world is Shibuya Station with an average of 2700 passengers each day. The Shibuya Crossing is the busiest crossing in the world where between 1000 and 2500 commuters cross the road at the same time.

The Akihabara district is popular because of its focus on electronic goods and the selling of products from popular Japanese films and comic strips known as anime and manga.

The Shintō and Buddhist religions are observed by most people in Japan. There are many Buddhist temples in Tokyo, such as Sensō-Ji temple in Asakusa.



Disclaimer: We hope you find the information and resources on our website useful. Please be aware that aspects of an individual's life may be controversial to some. Due to this, we highly recommend that you carefully research the individual before teaching about them to learners. If your learners do independent research about an individual, we advise using only pre-selected, appropriate sources of information and websites appropriate to their age.

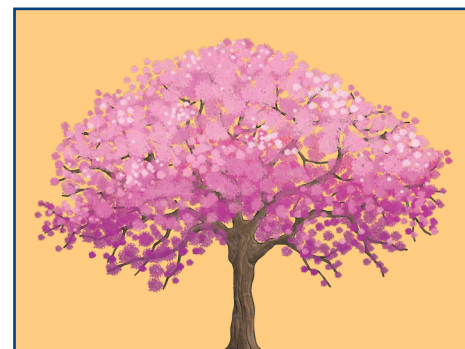
Disclaimer: We hope that you find the information on our website and in our resources useful. As far as possible, the contents of this resource are reflective of current professional research. However, please be aware that borders and capital cities may be disputed and information.

Disclaimer: All facts and statistics correct as of December 2024.

Tokyo's Climate

Tokyo is known to have a mild climate with a cool winter and a hot summer. Japan has four seasons with the warmer seasons of spring and autumn being the best time to visit. August is usually the hottest month with an average temperature of 27°C (80F) while the coolest temperatures occur in January with an average of 6°C (42F).

Spring is celebrated with the blossoming of cherry and peach trees in March or April. Hanami (which means 'flower viewing') is a popular activity for residents and visitors.



Buildings in Tokyo

The buildings of Tokyo are a mixture of old and modern in design. The Tokyo Tower, standing at 333 metres tall, was completed in 1958 as a broadcasting and observation tower. The tower is able to receive radio and television signals and has an aquarium and shopping centre in its basement. It was the tallest structure in Japan until 2020 when the Tokyo Sky Tree, measuring 634 metres, was built.

Tokyo is also home to the Imperial Palace where the Japanese imperial family live. The head of the imperial family is the emperor of Japan, who is currently Emperor Naruhito.



Food in Tokyo

Tokyo is famous for its many dishes including Edomae sushi, ramen noodles, wagyu beef and tempura (battered and deep-fried seafood and vegetables).

There are many places to eat in the city from street food to fine dining restaurants.



The Future of Tokyo

Tokyo is addressing environmental problems caused by air pollution in the city in many ways. This includes enlarging green spaces, suggesting people buy electric vehicles and encouraging the public to travel on trains, subways or buses.



Questions

1. What is the population of Tokyo? Tick one.

- around 15 million
 around 4 million
 around 24 million
 around 14 million

2. Draw **four** lines and match each sentence to its sub-heading.

Its currency is the Japanese yen.

Tokyo is also home to the Imperial Palace where the Japanese Imperial family live.

The city was named Tokyo (meaning Eastern Capital) in 1868.

There are many places to eat in the city from street food to fine dining restaurants.

Where Is Tokyo?

Food in Tokyo

What Is Life like in Tokyo?

What Buildings Are in Tokyo?

3. Fill in the missing words.

Spring is _____ with the blossoming of cherry and peach trees in March or April. Hanami (which means 'flower viewing') is a popular activity for residents and _____.

4. Look at the section called **The Future of Tokyo**.

Find and copy one word which means that 'something has become bigger than it was before'

5. Name **two** foods that are eaten in Tokyo.

• _____

• _____

6. Summarise what you have learnt about Tokyo in 25 words or fewer.

7. Which section of this text do you think is most important? Explain your choice.

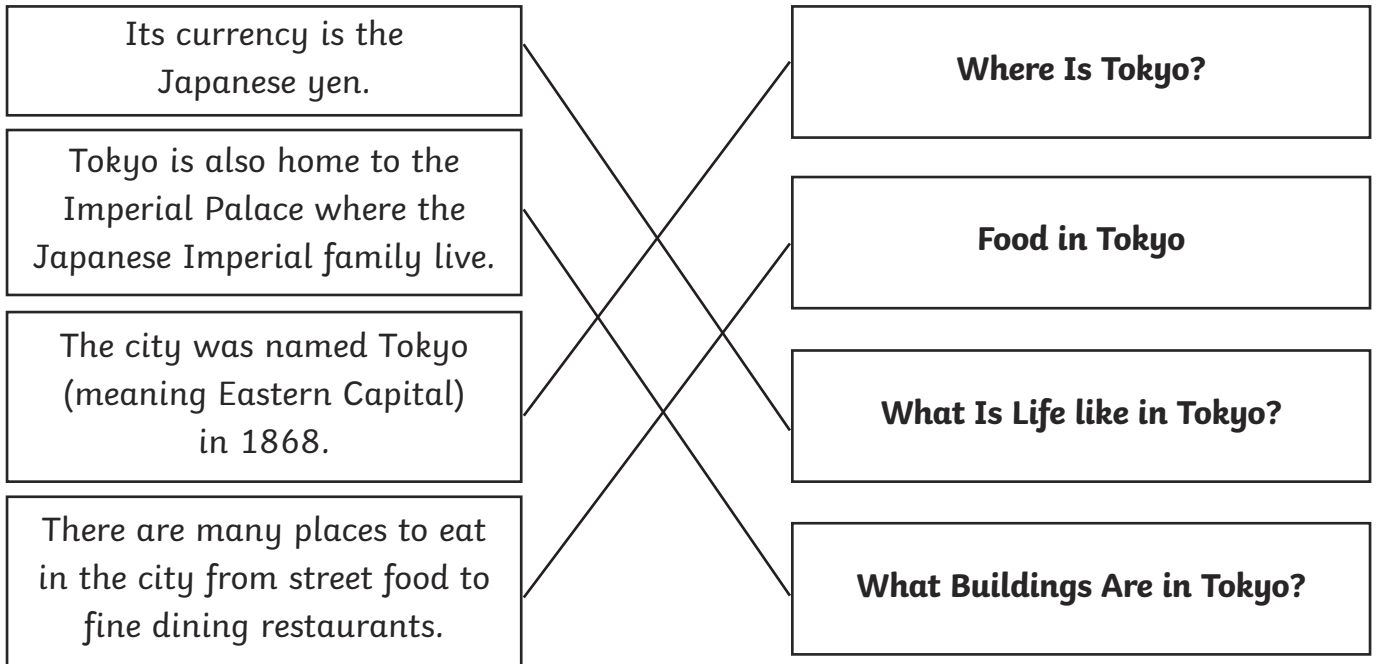
8. Would you like to visit Tokyo? Explain your reasons why.

Answers

1. What is the population of Tokyo? Tick one.

- around 15 million
 around 4 million
 around 24 million
 around 14 million

2. Draw **four** lines and match each sentence to its sub-heading.



3. Fill in the missing words.

Spring is **celebrated** with the blossoming of cherry and peach trees in March or April. Hanami (which means 'flower viewing') is a popular activity for residents and **visitors**.

4. Look at the section called **The Future of Tokyo**.

Find and copy one word which means that 'something has become bigger than it was before'

enlarging

5. Name **two** foods that are eaten in Tokyo.

Accept any two of the following: Edomae sushi; ramen noodles; wagyu beef or tempura.

6. Summarise what you have learnt about Tokyo in 25 words or fewer.

Pupils' own responses, such as: Tokyo is a city best visited in spring when the cherry trees blossom. The popular public transport helps you visit the tallest building in Japan.

7. Which section of this text do you think is most important? Explain your choice.

Pupils' own responses, such as: I think the most important part of the text is how Tokyo is tackling problems such as air pollution and making positive changes so that the place is a cleaner environment for its population.

8. Would you like to visit Tokyo? Explain your reasons why.

Pupils' own responses, such as: I would like to visit Tokyo because I would love to see the impressive height of the Tokyo Sky Tree and visit the aquarium in the basement. I would also love to visit in spring to see the cherry blossom trees as I love nature.

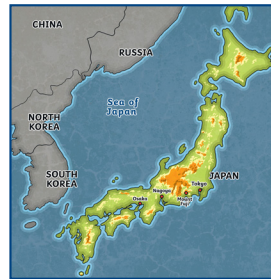


Tokyo

Tokyo is the capital city of Japan, which is on the eastern edge of the continent of Asia. Japan is an **archipelago** of 14,125 islands with the four main islands of Honshu, Hokkaido, Kyushu and Shikoku making up most of the land area.

Where Is Tokyo?

Tokyo is located on the island of Honshu at the head of Tokyo Bay on the Pacific Coast. It is Japan's largest city with a population of around 14 million. Covering an area of around 2190km², Tokyo is part of the metropolitan area known as Greater Tokyo. In ancient times, the city was known as a fishing village named Edo. In 1868, it was renamed Tokyo (meaning eastern capital).



What Is Life like in Tokyo?

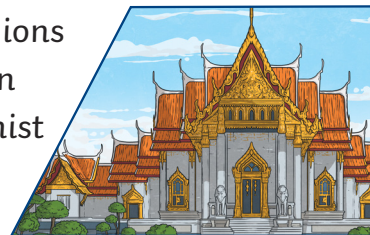
Tokyo is a leading city in the world because of the progress it has made in its economy and technology. This busy city is well known for its work in electronics, information technology, publishing and broadcasting. It is known for making vehicles and electrical goods. Tokyo uses a currency called the Japanese yen and manages the 3rd largest stock exchange (a place where stocks and shares, which are parts of companies, are bought and sold) in the world.

Tokyo's transport system consists of a network of trains, subways and buses. Shibuya Station is the busiest station in the world and appeared in the Guinness World Records in 2022 for its average

of 2.7 million daily commuters. As well as this, the Shibuya Crossing is the busiest pedestrian walkway in the world with between 1000 to 2500 commuters crossing the road at the same time.

Akihabara is popular because of its focus on electronics and the influence of Japanese film and comic strips known as anime and manga. With a nickname of the 'Electric Town', this area has themed arcades and shops that sell video games, figurines and card games.

The Shintō and Buddhist religions are observed by most people in Japan. There are many Buddhist temples in Tokyo, such as Sensō-Ji temple in Asakusa.

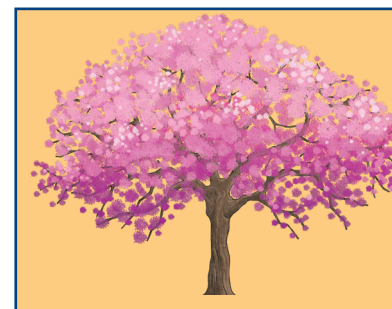


Disclaimer: We hope that you find the information on our website and in our resources useful. As far as possible, the contents of this resource are reflective of current professional research. However, please be aware that borders and capital cities may be disputed and information can quickly become out of date. The information given here is intended for general guidance purposes only and may have to be adapted to meet the needs of your learners.

Tokyo's Climate

Tokyo is known to have a temperate climate with a mild winter and a hot, humid summer. Japan has four seasons with the warmer seasons of spring and autumn being the best time to visit the country. August is usually the hottest month with an average temperature of 27°C (80F) while the coolest temperatures occur in January with an average of 6°C (42F).

Spring is celebrated with the blossoming of cherry and peach trees in March or April. Veno Park has over 1000 blossom trees, making it a well-visited picnic spot for families as hanami (meaning 'flower viewing') is a popular activity.



Buildings in Tokyo

The buildings of Tokyo are a mixture of historic temples and shrines with the modern buildings of a changing culture. The Tokyo Tower, standing at 333 metres, was completed in 1958 as a broadcasting and observation tower. The tower not only receives radio and television signals but also has an aquarium and shopping centre in its basement. Modelled on the Eiffel Tower in Paris, it was the tallest structure in Japan until 2020 when the Tokyo Sky Tree, measuring 634 metres, was built.

Tokyo is also home to the Imperial Palace, where the Japanese imperial family live. The head of the imperial family is the emperor of Japan, who is currently Emperor Naruhito. Emperor Naruhito is a constitutional monarch, meaning he has no power over the government.

Food in Tokyo

Tokyo is famous for its many dishes including Edomae sushi, ramen noodles, wagyu beef and tempura (battered and deep-fried seafood and vegetables). Food is sold in all types of locations from street food vendors to award-winning restaurants.

The Future of Tokyo

Tokyo is addressing environmental problems with new ideas. It aims to lower the carbon footprint caused by air pollution in the city by enlarging green spaces, advertising electric vehicles and promoting public transport.



Glossary

archipelago: A group of islands surrounded by the sea.

Questions

1. Which island is Tokyo located on? Tick one.

- Hokkaido
 Shikoku
 Honshu
 Kyushu

2. Draw **four** lines and match each feature to its number.

blossom trees

average of 2.7 million

size of Tokyo

14,125

daily commuters at
Shibuya Station

around 2190km²

number of islands in Japan

over 1000

3. Fill in the missing words.

The Tokyo Tower, standing at 333 _____ tall, was completed in 1958 as a _____ and observation tower.

4. Which currency does Tokyo use?

5. Look at the section called **Where Is Tokyo?**

Find and copy one word that means the same as 'found' or 'situated'.

6. Why do you think that Akihabara has the nickname of the '**Electric Town**'? Explain your answer.

7. What are the similarities and differences between the seasons in Tokyo?

8. How do you think you would feel taking the Shibuya Crossing? Give reasons for your answer.

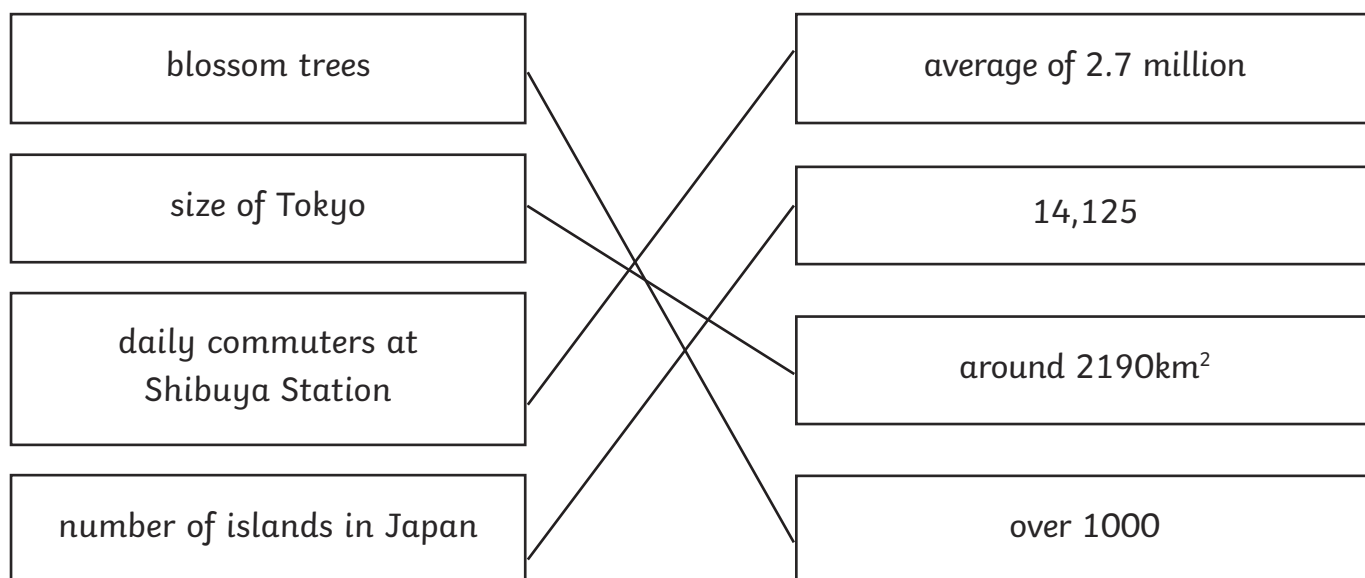
9. Which place mentioned in the text would you most like to visit in Tokyo? Explain your answer.

Answers

1. Which island is Tokyo located on? Tick one.

- Hokkaido
 Shikoku
 Honshu
 Kyushu

2. Draw **four** lines and match each feature to its number.



3. Fill in the missing words.

The Tokyo Tower, standing at 333 **metres** tall, was completed in 1958 as a **broadcasting** and observation tower.

4. Which currency does Tokyo use?

Tokyo uses the currency of the Japanese yen.

5. Look at the section called **Where Is Tokyo?**

Find and copy one word that means the same as 'found' or 'situated'.

located

6. Why do you think that Akihabara has the nickname of the '**Electric Town**'? Explain your answer.

Pupils' own responses, such as: I think that the nickname 'Electric Town' because

Akihabara focuses on electronic products, such as Japanese films, video games and themed arcades.

7. What are the similarities and differences between the seasons in Tokyo?

Pupils' own responses, such as: Tokyo is very hot and humid in the summer months compared to the milder temperatures in the winter. The seasons of spring and autumn are pleasantly warm though, making it a better time to visit the city.

8. How do you think you would feel taking the Shibuya Crossing? Give reasons for your answer.

Pupils' own responses, such as: I think that it would be quite a scary experience being on the Shibuya Crossing for the first time as there would be so many people on the road simultaneously. I think it would be easier if you lived in Tokyo as you would become familiar with the crossing over time.

9. Which place mentioned in the text would you most like to visit in Tokyo? Explain your answer.

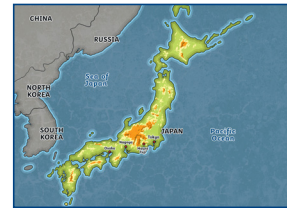
Pupils' own responses, such as: I would like to visit Akihabara as I am very interested in Anime and Manga comic strips and would love to see the themed arcades.

Tokyo

Tokyo is the capital city of Japan, which is located on the eastern edge of the continent of Asia. This archipelago (a group of islands surrounded by the sea) made up of 14,125 islands includes the four main islands: Honshu, Hokkaido, Kyushu and Shikoku.

Where Is Tokyo?

Tokyo is located on the island of Honshu at the head of Tokyo Bay, an inlet on the Pacific Coast. It has a population of around 14 million, making it the largest city in the country. Covering an area of around 2190km², Tokyo is part of the wider metropolitan area known as Greater Tokyo. Originally an ancient fishing village named Edo, the city was renamed Tokyo (meaning eastern capital) in 1868.



What Is Life like in Tokyo?

Tokyo is world renowned for being a leading city in its innovative economy and technological advancement. This bustling metropolis drives progress in electronics, information technology, publishing and broadcasting. It is known for its manufacturing of vehicles and electrical goods and is home to many of the world's major corporations. The currency used in Tokyo is the Japanese yen. Tokyo manages the 3rd largest stock exchange (a place where stocks and shares, which are parts of companies, are bought and sold) in the world.

Tokyo's urban public transport system consists of a network of trains, subways and buses. It is home to Shibuya Station, which is regarded as the busiest station in the world, gaining a place in the Guinness World Records in 2022 for having an average of 2.7 million

commuters using the station daily. In addition to this, the Shibuya Crossing is the busiest pedestrian walkway in the world with between 1000 to 2500 commuters crossing the road simultaneously.

The district of Akihabara is popular with residents and tourists because of its focus on electronics and the influence of Japanese film and comic strips known as anime and manga. Nicknamed 'Electric Town', this area is a hive of activity with themed arcades and shops selling merchandise including video games, figurines and card games.

The Shintō and Buddhist religions are observed by most people in Japan. There are many Buddhist temples in Tokyo, such as Sensō-Ji temple in Asakusa.

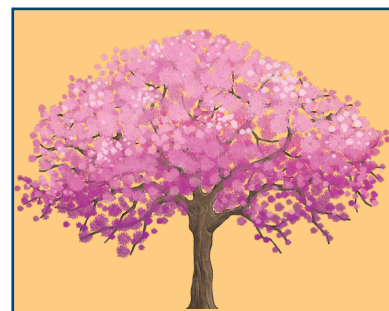


Disclaimer: We hope that you find the information on our website and in our resources useful. As far as possible, the contents of this resource are reflective of current professional research. However, please be aware that borders and capital cities may be disputed and information can quickly become out of date. The information given here is intended for general guidance purposes only and may have to be adapted to meet the needs of your learners.

Tokyo's Climate

Tokyo is known to have a temperate climate with a mild, sunny winter contrasting with the hot, humid and rainy summer. Japan has four seasons with many choosing the milder seasons of spring and autumn to visit. August is usually the hottest month with an average temperature of 27°C (80F) while the coolest temperatures occur in January with an average of 6°C (42F).

The arrival of spring is marked by the abundance of cherry and peach blossom trees, which bloom in March or April each year. Hanami, meaning 'flower viewing', is a popular part of the Japanese calendar. The park of Veno in Tokyo is renowned for its blossom trees with over 1000 decorating the area and making it a well-visited picnic spot for families.



Buildings in Tokyo

The buildings of Tokyo are a mix of historic buildings, such as temples and shrines, as well as modern structures. The Tokyo Tower, which stands at 333 metres high with its signature orange and white stripes, was completed in 1958 as a broadcasting and observation tower. In addition to receiving radio and television signals, it has an aquarium and shopping centre in its basement. Modelled on the Eiffel Tower in Paris, it was the tallest structure in Japan until 2020 when the Tokyo Sky Tree was built: it stands at an impressive 634 metres.

Tokyo is also home to the Imperial Palace, where the Japanese imperial family live. The head of the imperial family is the emperor of Japan, who is currently Emperor Naruhito. Emperor Naruhito is a constitutional monarch, meaning he has no power over the government.



Food in Tokyo

Tokyo is famous for its many delicious dishes. These include Edomae sushi, ramen noodles, wagyu beef and tempura (battered and deep-fried seafood and vegetables). Food is sold in many locations from street food vendors to restaurants with Michelin Stars (considered to be one of the highest awards a restaurant can receive).



The Future of Tokyo

Tokyo is progressive in its attitude to environmental challenges and initiatives. It aims to reduce its carbon footprint, which is caused by air pollution. The city has introduced many ventures to do so: it has expanded green spaces, promoted electric vehicles and extended its public transport.



Questions

- Why was Tokyo awarded a place in the Guinness World Records in 2022? Tick one.
 - for the best public transport system
 - for the busiest crossing in the world
 - for the busiest station in the world
 - for the largest stock exchange in the world
- Draw **four** lines and match each summary to the sub-heading used in the text.

Japan boasts a mixture of modern and historical buildings.

Tokyo has many plans for improving environmental issues.

Tokyo is a progressive city in the world of technology.

Tokyo's temperature makes the seasons of autumn and spring a good time to visit.

The Future of Tokyo

What Is Life like in Tokyo?

Tokyo's Climate

What Buildings Are in Tokyo?

- What is considered to be one of the highest awards a restaurant can receive?

- Look at the section called **The Future of Tokyo**

Write a synonym for the word **expanded**.

- Fill in the missing words.

Emperor Naruhito is a _____ monarch, meaning he has no power over the _____.

6. Summarise what you have learnt about life in Tokyo in 25 words or fewer.

7. Why do you think it is important for Tokyo to have a strong public transport system?
Explain your answer.

8. Which fact about Tokyo surprised you? Explain why.

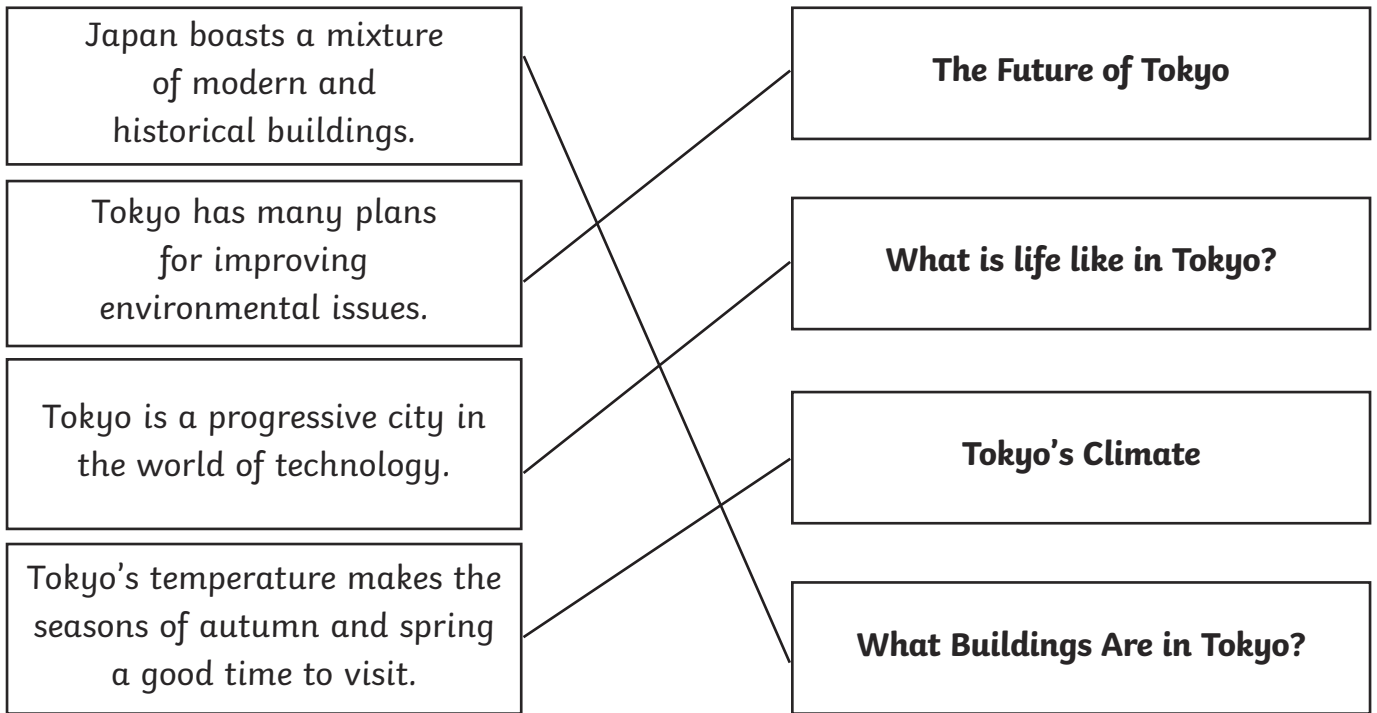
9. Do you think that Tokyo is a leading city in the world? Use evidence from the text to support your answer.

10. Tick one box in each row to show whether each statement is **true** or **false**.

	True	False
The tallest structure in Tokyo is the Tokyo Tower.		
The name Tokyo means capital.		
Blossom trees signal the start of spring.		
Tokyo is found on the continent of Asia.		
Tokyo manages the largest stock exchange in the world.		

Answers

- Why was Tokyo awarded a place in the Guinness World Records in 2022? Tick one.
 - for the best public transport system
 - for the busiest crossing in the world
 - for the busiest station in the world**
 - for the largest stock exchange in the world
- Draw **four** lines and match each summary to the sub-heading used in the text.



- What is considered to be one of the highest awards a restaurant can receive?

The highest award a restaurant can achieve is a Michelin Star.

- Look at the section called **The Future of Tokyo**

Write a synonym for the word **expanded**.

Accept any suitable synonym, such as: enlarge; increase; inflate; lengthen.

- Fill in the missing words.

Emperor Naruhito is a **constitutional** monarch, meaning he has no power over the **government**.

6. Summarise what you have learnt about life in Tokyo in 25 words or fewer.

Tokyo is a leading city in technology and electronics and has one of the world's largest public transport systems to cater for its vast population.

7. Why do you think it is important for Tokyo to have a strong public transport system?

Explain your answer.

Pupils' own responses, such as: I think it is important for the city to have a strong public transport system because of its large population that frequents the city. It also reduces pollution in the city by the overuse of other vehicles such as cars.

8. Which fact about Tokyo surprised you? Explain why.

Pupils' own responses, such as: I was surprised by the number of people crossing the road simultaneously at the Shibuya Crossing. I did not know that so many people could do this safely.

9. Do you think that Tokyo is a leading city in the world? Use evidence from the text to support your answer.

Pupils' own responses, such as: I think that Tokyo is a leading city in the world as it is progressive in technology. It is well known for manufacturing vehicles and electronic goods around the world. It also pioneers the importance of environmental change and has expanded green spaces and public transport.

10. Tick one box in each row to show whether each statement is **true** or **false**.

	True	False
The tallest structure in Tokyo is the Tokyo Tower.		✓
The name Tokyo means capital.		✓
Blossom trees signal the start of spring.	✓	
Tokyo is found on the continent of Asia.	✓	
Tokyo manages the largest stock exchange in the world.		✓

Award 2 marks for all five correct.

Award 1 mark for four correct.