

Name: _____

Date: _____

- 1 Use the multiplication given to complete the related facts.

$$28 \times 6 = 168$$

$28 \times 7 = \square$

$168 \div 28 = \square$

- 2 Complete the division.

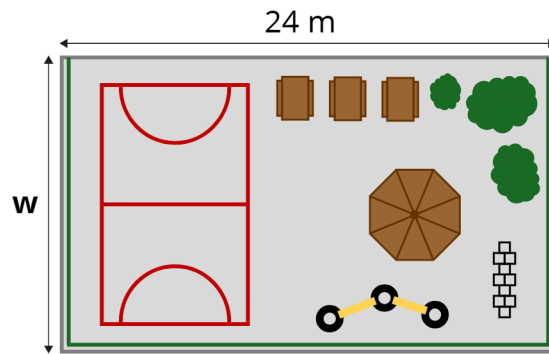
	9	8	5	1	4	

- 3 Farm workers pick 28,253 blueberries over a year.
Blueberries are sold in boxes of 8
How many full boxes can be made?

- 4 Work out the division.

	2	1	8	8	2	

- 5 What is the width of the playground?



area = 528 m^2

w = m

- 6 Work out the division.

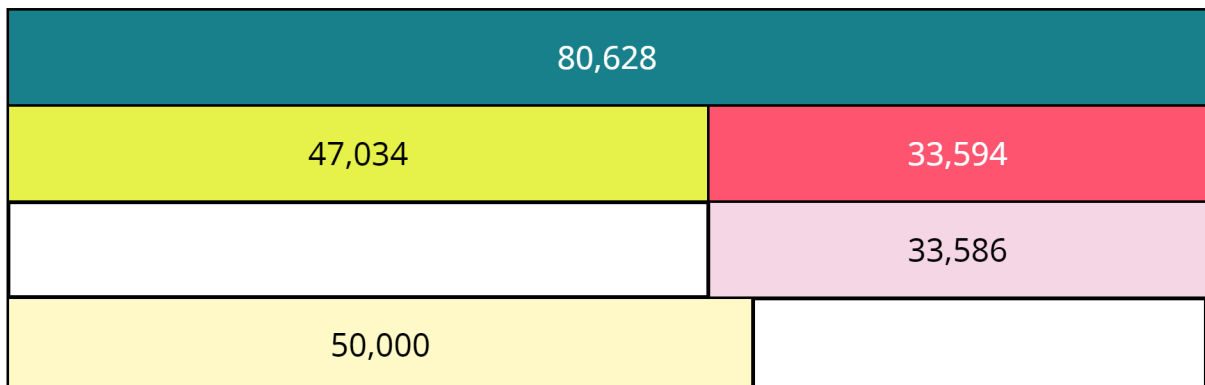
$3,322 \div 18 =$ r

- 7 A company has 644 members of staff, 19 managers and 4 directors. Everyone is invited to a special meal. Each table seats 19 people. How many tables are needed?

- 8 A coach can seat 49 people.
627 supporters are travelling to a cricket match by coach.
How many coaches are needed to transport all the supporters?

- 9 Jo is playing a game of marbles with 8 friends.
They have 3 bags of marbles.
Each bag contains 162 marbles.
How many marbles do they each get if the marbles are shared equally between them?

- 10 Complete the bar model.



- 11 Use the cards to order these numbers from greatest to smallest.

Greatest

↓

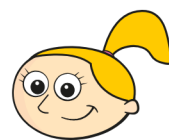
Smallest

$3\frac{1}{2}$
$\frac{20}{7}$
$\frac{4}{14}$
$3\frac{1}{3}$

- 12 Two children are playing a game.
Circle which child did the best.



Amir scores 2 out of 7



Eva scores 13 out of 14

- 13 Complete the calculation.
Give your answer in its simplest form.

$$\frac{7}{11} - \frac{1}{2} = \frac{\boxed{}}{\boxed{}}$$

- 14 Complete the addition.

Give your answer as an improper fraction and a mixed number in their simplest forms.

$$\frac{6}{7} + \frac{9}{8} = \frac{\boxed{}}{\boxed{}} = \boxed{} \frac{\boxed{}}{\boxed{}}$$

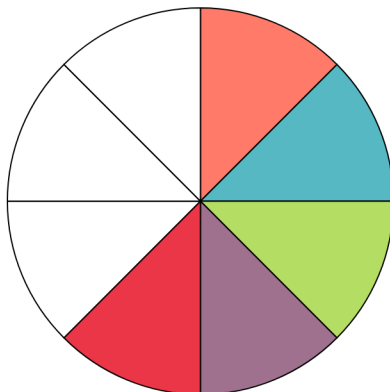
- 15 Dr Fisher has $\frac{8}{9}$ of a tank of petrol in their car. He drives to see their friend and

uses $\frac{1}{8}$ of a tank of petrol.

What fraction of the tank of petrol is left in the tank? Give your answer in its simplest form.

$$\frac{\boxed{}}{\boxed{}}$$

16 Complete the calculation.



$$\frac{1}{8} \times 5 = \frac{\boxed{}}{\boxed{}}$$

17 Alex's dog eats $4\frac{1}{2}$ tins of food a week.

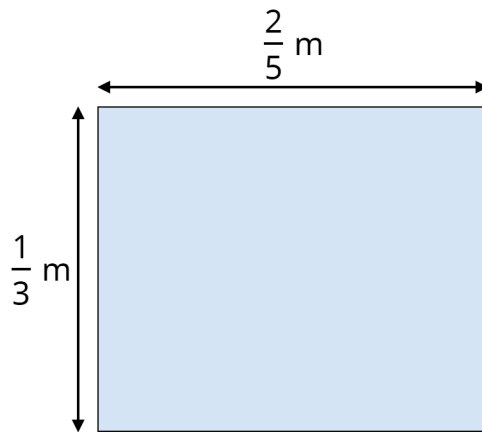
How many tins does Alex's dog eat in a year?

tins

18 Complete the calculation.

$$\frac{\square}{\square} = \frac{2}{3} \times \frac{1}{2}$$

19 Calculate the area of the shape.
Give your answer in its simplest form.



$$\frac{\square}{\square} \text{ m}^2$$

- 20 Work out the division.
Give your answer in its simplest form.

$$\frac{13}{14} \div 12 = \frac{\boxed{}}{\boxed{}}$$