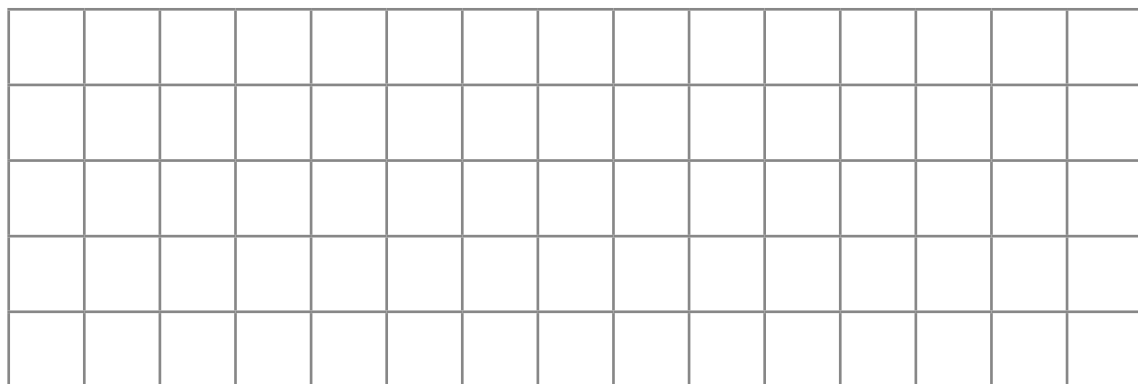
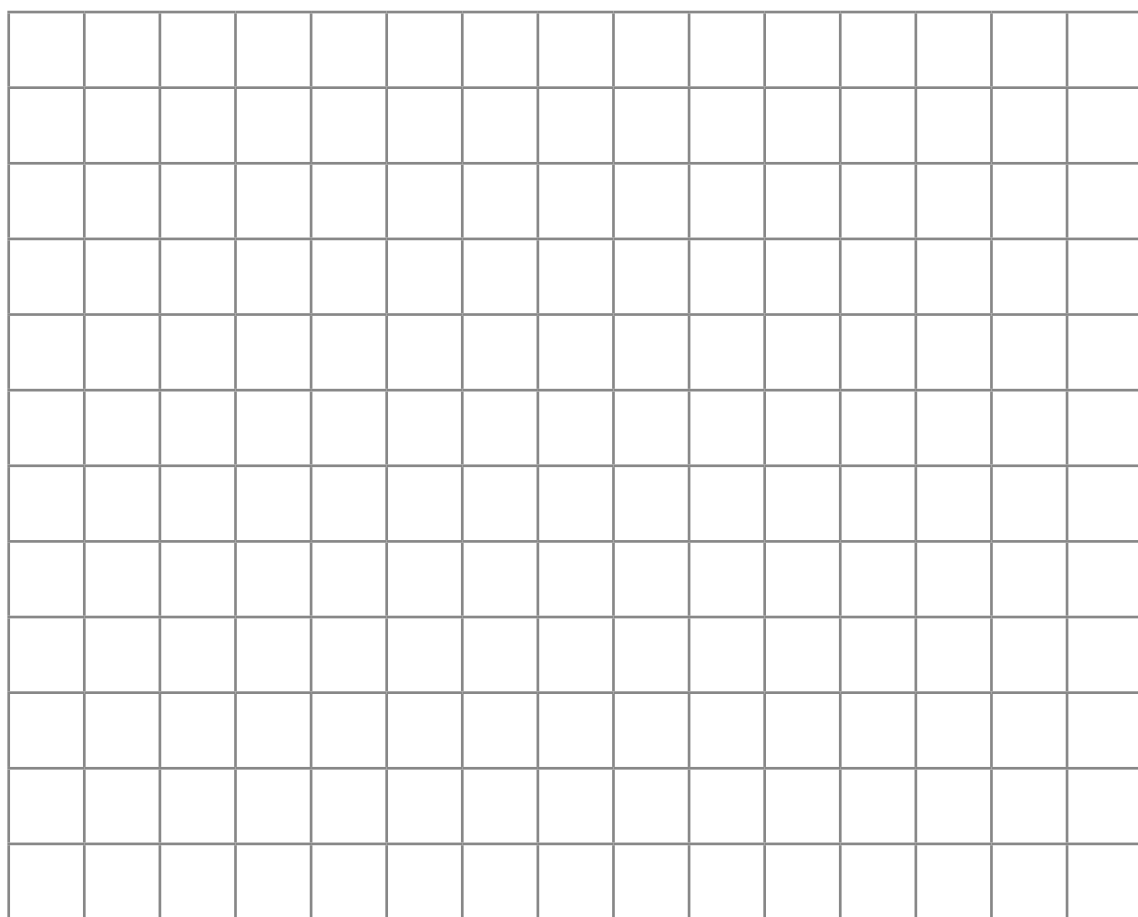


Draw 2-D shapes

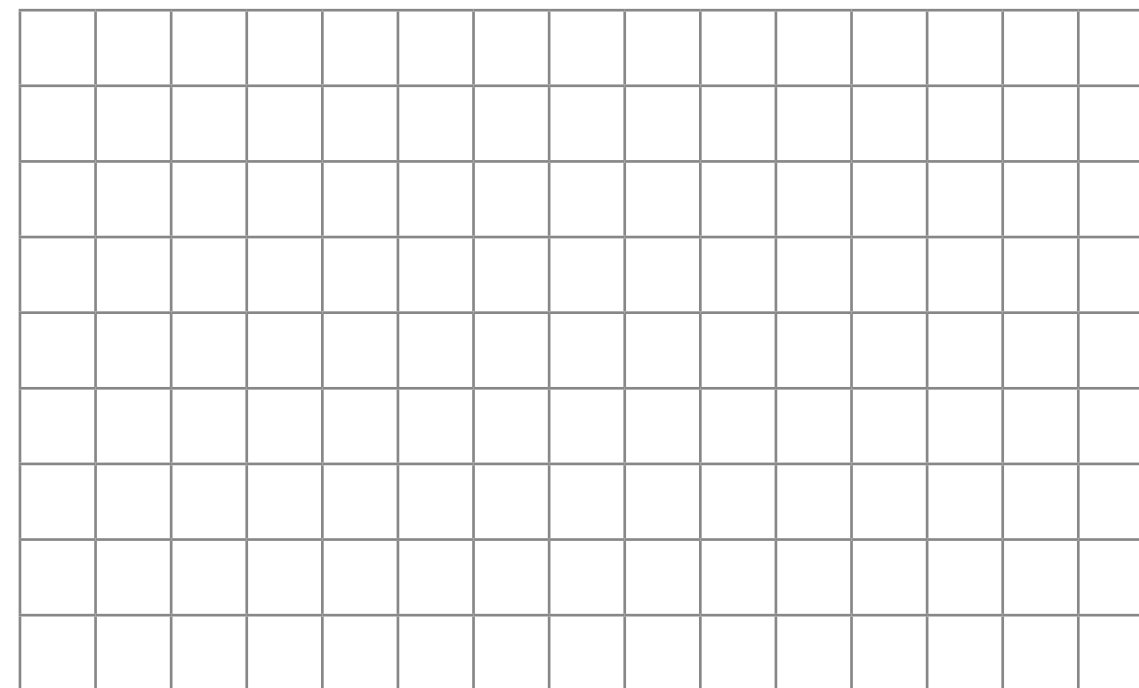
- 1 Draw two different squares.



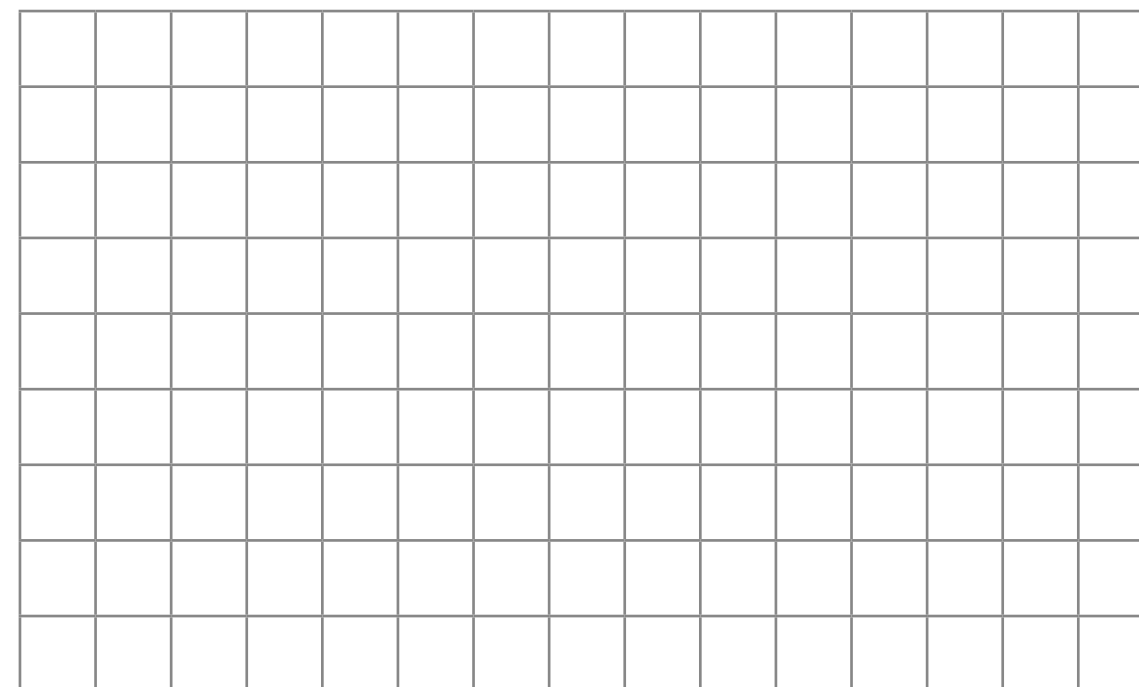
- 2 Draw three different rectangles.



- 3 Draw three different triangles.



- 4 Draw three different hexagons.



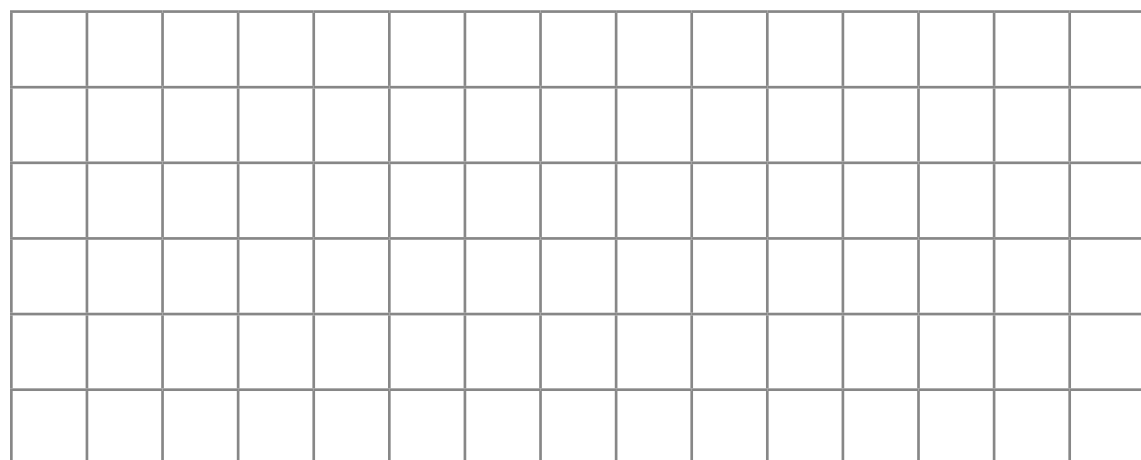
- 5 Compare all your shapes with a partner's shapes. What differences can you see?



6 Kim is drawing a 2-D shape.

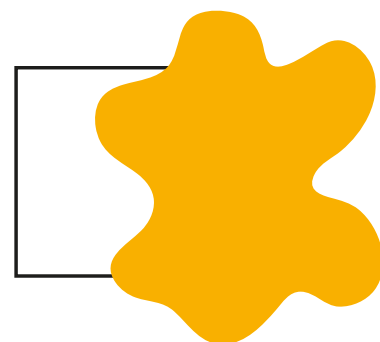


Draw Kim's shape.



Is there more than one answer?

7 Ben has drawn a 2-D shape.
He has spilt ink on his drawing.



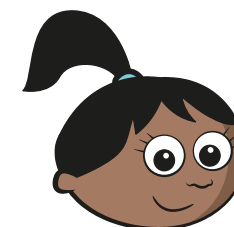
What could Ben's shape be? _____

What shape can it **not** be? _____

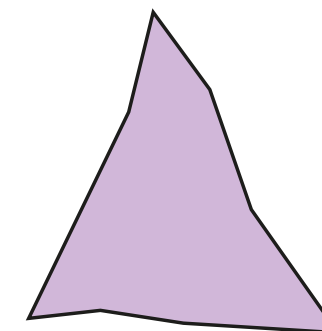
How do you know?



8



I have drawn
a triangle.



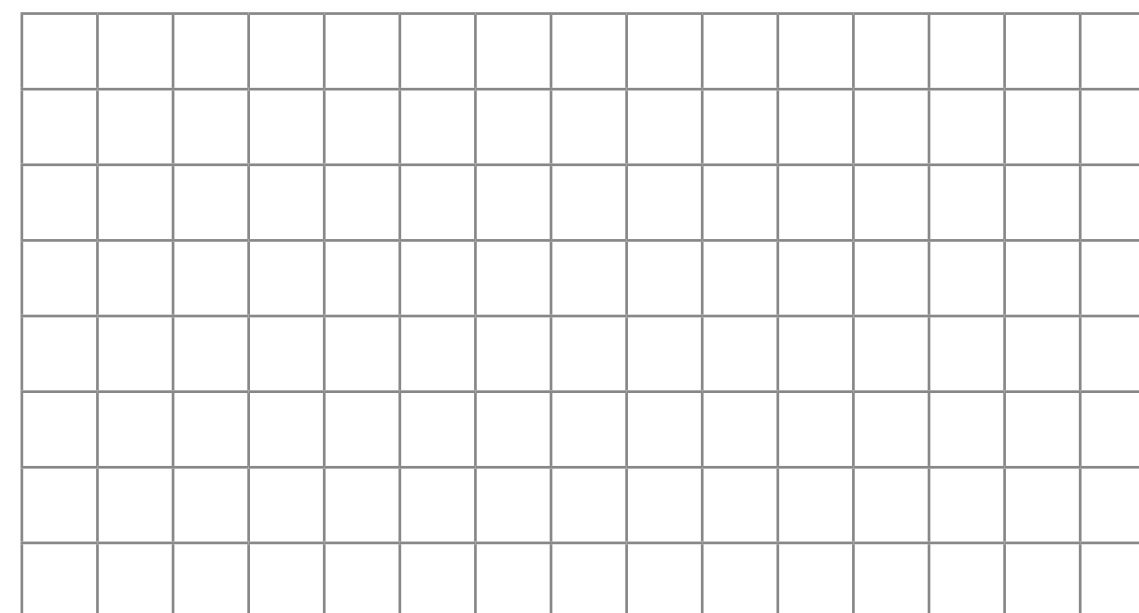
Do you agree with Sam? _____

Why?

9 Follow the instructions.

Read them all before you start.

- Draw a rectangle in the centre of the grid.
- Draw a square inside the rectangle.
- Draw a hexagon below the rectangle.
- Draw a triangle above the rectangle.



Make up some instructions like this for a partner.

