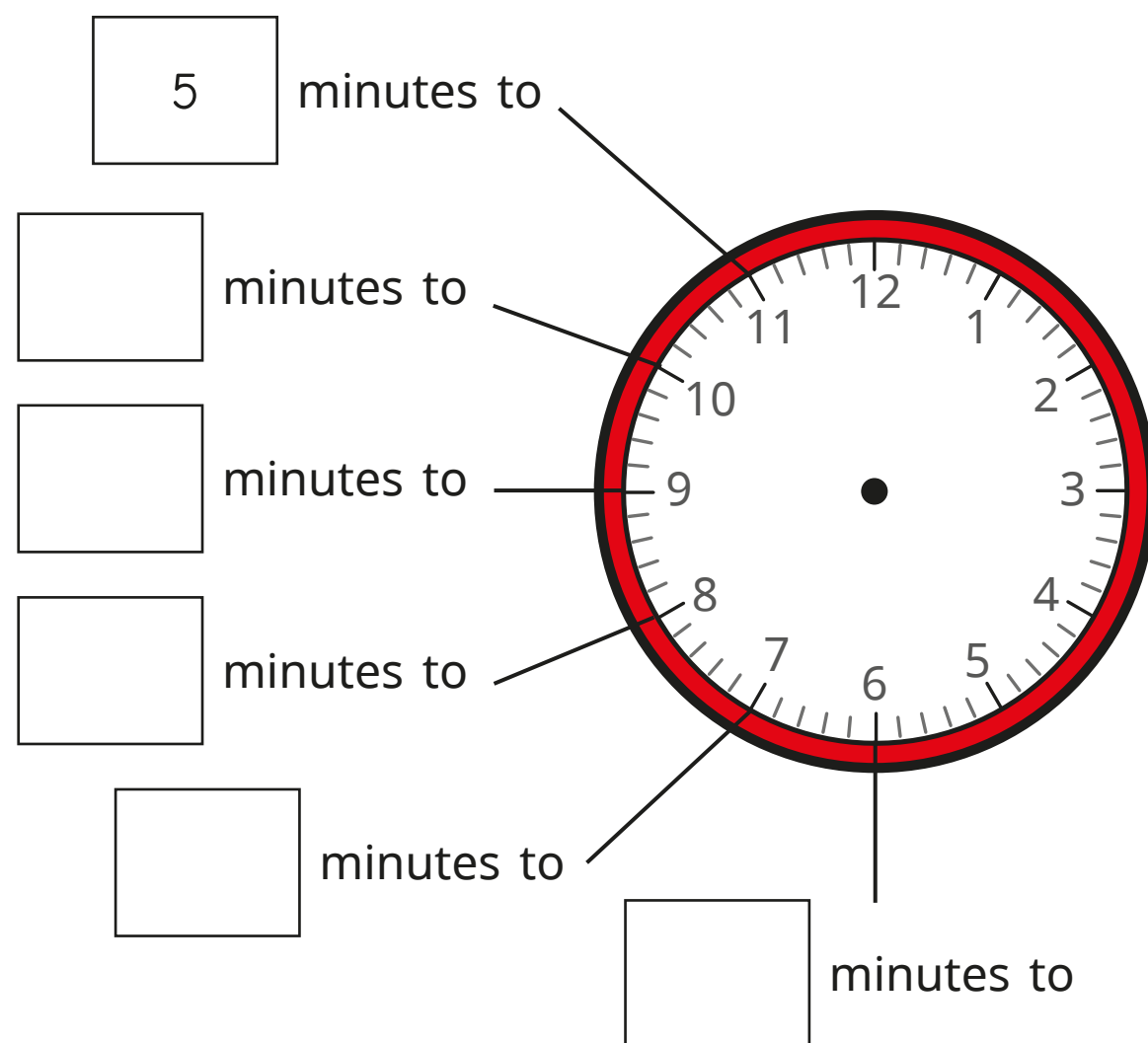


Tell the time to the hour

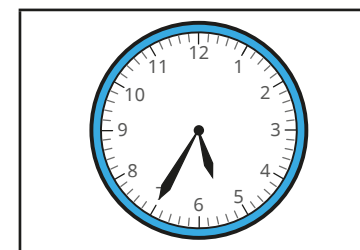
- 1 a)** What time will it be when the minute hand is pointing to each number?

The first one has been done for you.

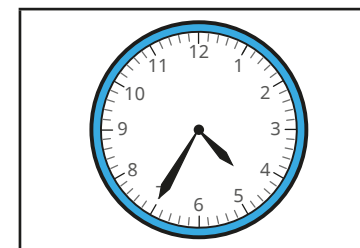


- b)** What is another way of saying "15 minutes to"?

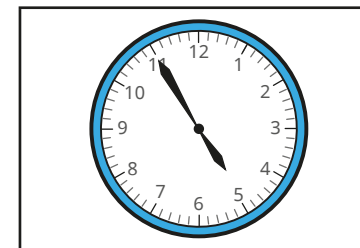
- 2** Match the clocks to the times.



25 minutes
to 5

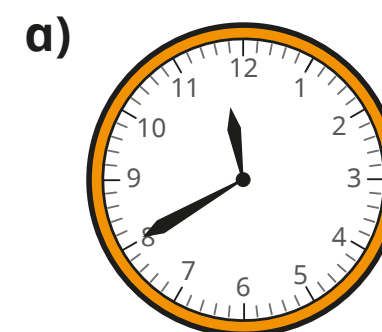


5 minutes
to 5

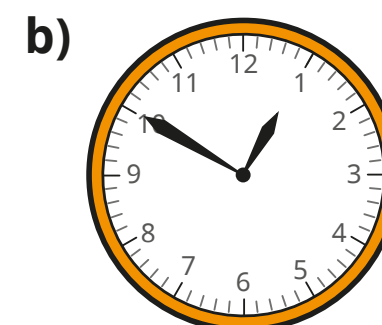


25 minutes
to 6


- 3** Write the times shown on the clocks.




minutes to 12

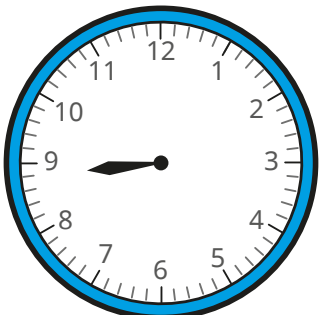


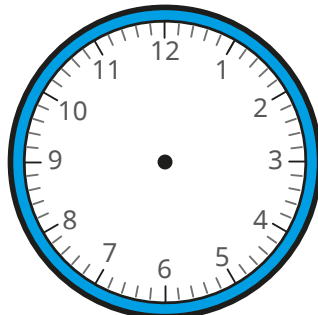
minutes to 1

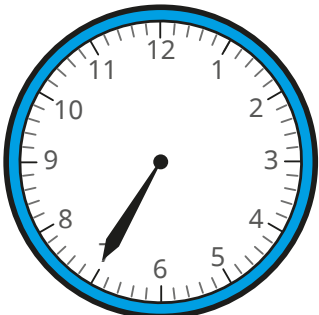
c)  minutes to

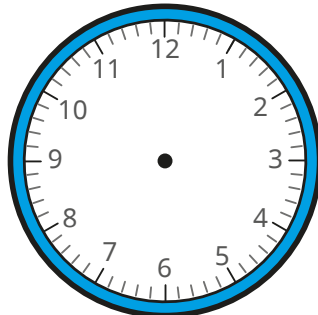
d)  minutes to

4 Draw hands on the clocks to show the times.
Some have been started for you.

a) 
10 minutes to 9

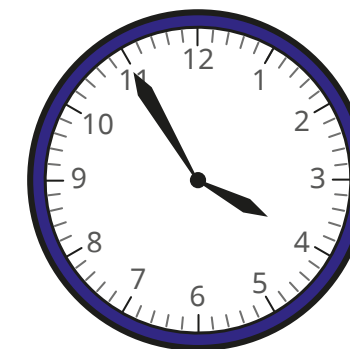
c) 
5 minutes to 1

b) 
25 minutes to 12

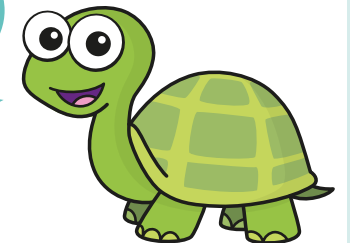
d) 
20 minutes to 8



5 Tiny is telling the time.



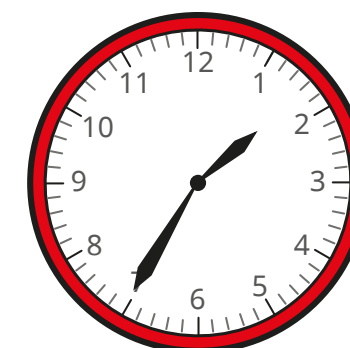
The time is
11 minutes to 4



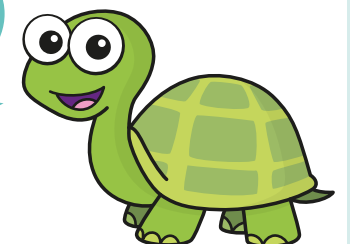
a) What mistake has Tiny made?

b) What is the correct time?

6 Tiny is telling the time.



The time is
35 minutes past 1



How can Tiny improve this answer?

