



Pupil Workbook  
Level 6 Week 1

Name: \_\_\_\_\_

**1. Write the common exception words.**

Which is the tricky part of the word? Why is that part tricky? Colour the tricky part in a different colour. Write the word two more times.

door

floor

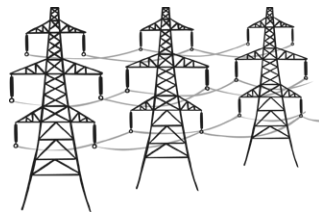
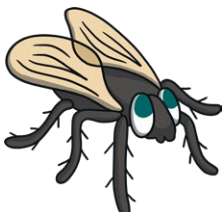
\_\_\_\_\_

\_\_\_\_\_

\_\_\_\_\_

\_\_\_\_\_

**2. Spell the words.**



\_\_\_\_\_

\_\_\_\_\_

\_\_\_\_\_

**3. Answer the questions.**

Read these silly questions and answer them by circling 'yes' or 'no'.

**Could a pylon eat a fly?**

yes no

**Would a spy use a magnifying glass?**

yes no

**Could a python fly in the sky?**

yes no

### 1. Read and match.

Read the clues and draw a line to match the clue to the correct picture.

#### Clue 1

You might see me fly in the sky or flutter by your window. I need to dry my wings before I can fly.

**What am I?**



#### Clue 2

I fly through the sky at a very high speed. I can fly higher than the pylons.

**What am I?**



#### Clue 3

I am a shy animal. I like to have a supply of grains. I live in a dry burrow, not a pig sty. Some people identify me as a rat.

**What am I?**



#### Clue 4

I use a magnifying glass to look for clues. I apply what I know to work out why something has happened. I reply to secret letters. If you ask me if I am a spy, I will deny it.

**Who am I?**



### 1. Read the story.

Highlight all of the words that contain the /igh/ phoneme.

**igh    ie    i\_e    i    y**

In the tropical rainforest, we went looking for a wild tiger. The moon was bright in the night sky as we used our binoculars to spy for footprints. We tried to find a clue for five days but we did not find a thing. We were so sad that we cried and cried. It got so cold at night that we had to use dry wood to make a fire. We tried to be careful so we didn't make the plants die from the heat.

At last, we spied a tiger! It crept right by our camp and then out of sight. It had taken a long time but it was amazing to see a wild tiger.

### 2. Sort the words.

Sort the words from the story into the table.

<b>igh</b>	<b>ie</b>	<b>i_e</b>	<b>i</b>	<b>y</b>

**1. Write the common exception words.**

Which is the tricky part of the word?

**door**

**floor**

**2. Write a word that uses each grapheme.**

Use the spelling rules to help you decide how to spell each word. Fill in the table below. Can you think of a word for each box? Check your spellings with a dictionary.

Use <b>igh</b> when...	Use <b>ie</b> when...	Use <b>i_e</b> when...	Use <b>i</b> when...	Use <b>y</b> when...
<ul style="list-style-type: none"> <li>• it is in the middle or end of a word.</li> <li>• it is followed by 't'.</li> </ul>	<ul style="list-style-type: none"> <li>• it is at the end of words.</li> <li>• it is a suffix.</li> </ul>	<ul style="list-style-type: none"> <li>• it is in the middle of a word. This is the most common / igh/ sound.</li> </ul>	<ul style="list-style-type: none"> <li>• it is at the start.</li> <li>• it is in words of 2 or more syllables.</li> </ul>	<ul style="list-style-type: none"> <li>• it is at the end of a word. It can sometimes be used in the middle of a word.</li> </ul>

**igh**

**ie**

**i\_e**

**i**

**y**

**1. Write the sentence your teacher says.**

Think carefully about which graphemes to use to spell the words.

---

---

---

---

---

---

---

---

How confident do you feel?



**igh**

**ie**

**i\_e**

**i**

**y**

**1. Write your own silly sentence.**

Use words containing the **y** grapheme.

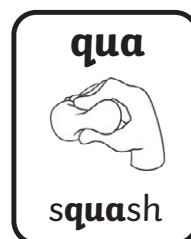
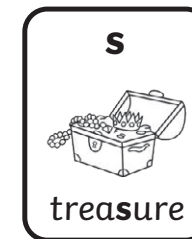
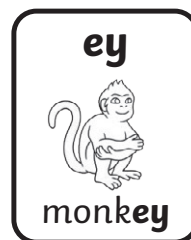
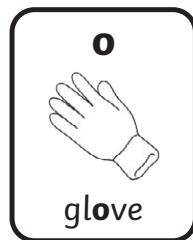
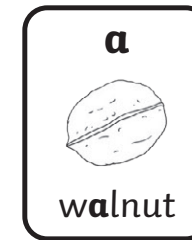
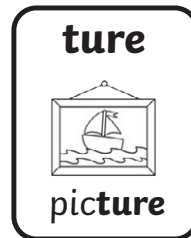
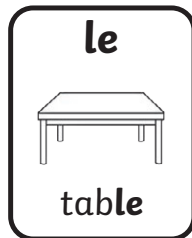
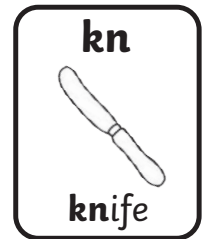
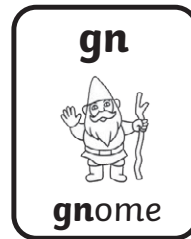
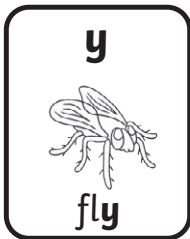
---



---



---



**2. Practise spelling the focus words.**

Look and Say	Look, Say and Write	Cover and Write	Check
by			
dry			
shy			
fly			
spy			
reply			
pylon			
python			
door			
floor			