

# Honeycomb Hexagons

**Adding the Suffixes -er, -ed and -ing to Words with More Than One Syllable  
(unstressed last syllable – DO NOT double the final consonant)**

Find your way through the hexagon grid by shading in words that are spelt correctly. The first one has been done for you. Look at the surrounding words and shade in the word that has the correct spelling. You should find one continuous path through the board.

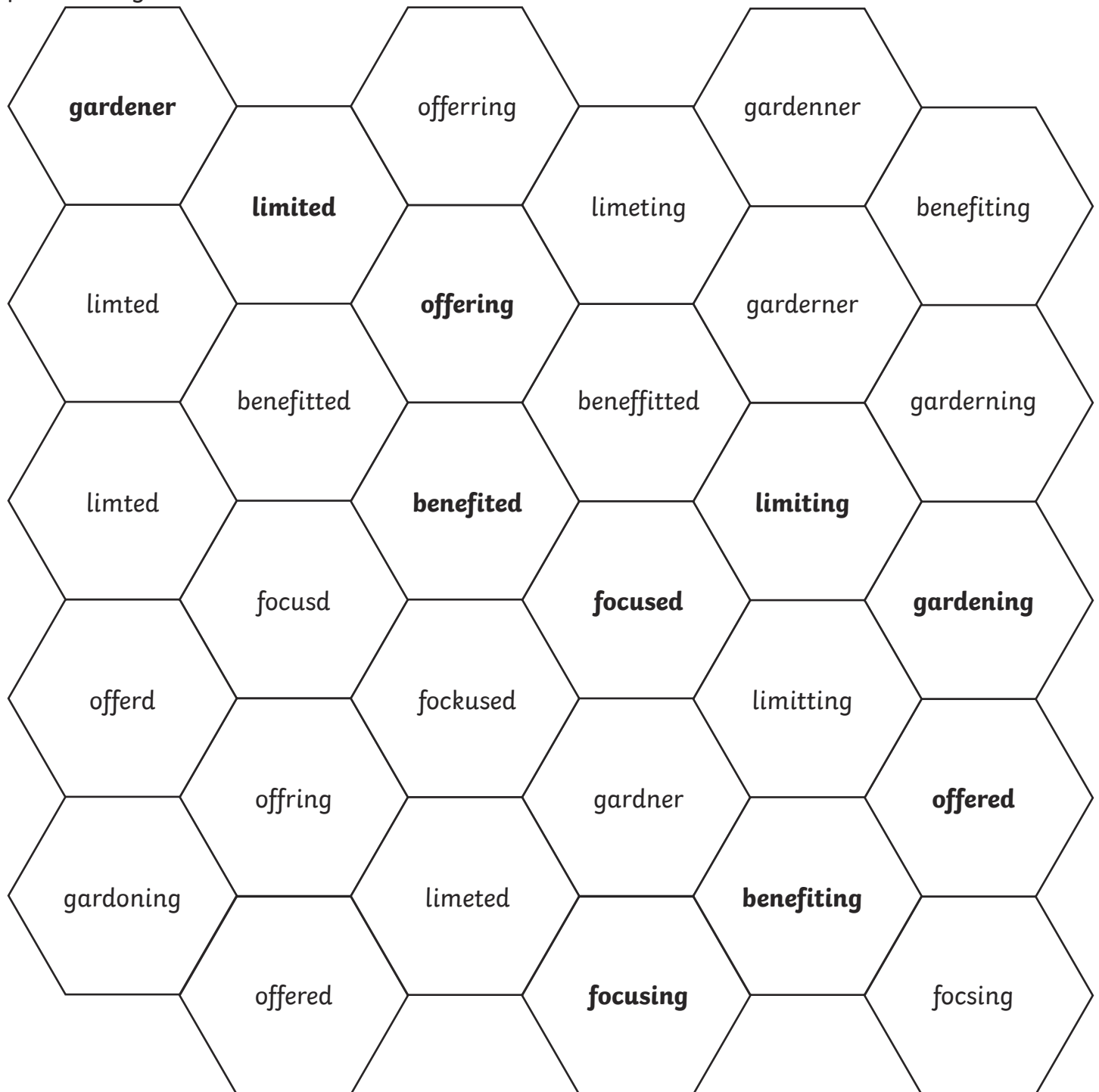
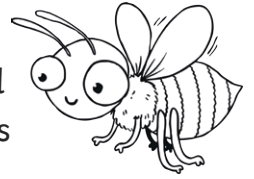


**Challenge:** Below each word that is spelt incorrectly, write the correct spelling of the word.

# Honeycomb Hexagons Answers

**Adding the Suffixes -er, -ed and -ing to Words with More Than One Syllable  
(unstressed last syllable – DO NOT double the final consonant)**

Find your way through the hexagon grid by shading in words that are spelt correctly. The first one has been done for you. Look at the surrounding words and shade in the word that has the correct spelling. You should find one continuous path through the board.



**Challenge:** Below each word that is spelt incorrectly, write the correct spelling of the word.