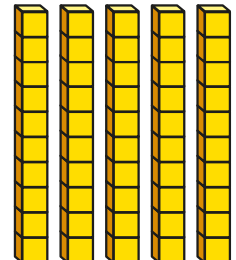



Use a place value chart

1 Complete the sentences.

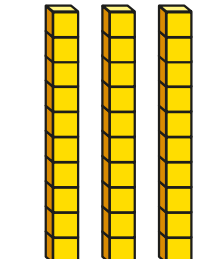
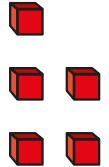
a)

Tens	Ones
	

There are tens
and ones.

The number is

b)

Tens	Ones
	

There are tens
and ones.

The number is

What is the same and what is different about the place value charts?



2 Draw base 10 to show the numbers.

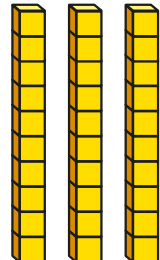

a) 26

Tens	Ones

b) 47

Tens	Ones

3 Here are two place value charts.

Tens	Ones
	

Tens	Ones
3	2

What is the same and what is different about the place value charts?



- 4 What numbers are shown?
Complete the sentences.

a)

Tens	Ones
2	6

There are tens and ones.

The number is

b)

Tens	Ones
3	0

There are tens and ones.

The number is

c)

Tens	Ones
0	9

There are tens and ones.

The number is

- 5 Complete the place value charts and sentences.

a)

Tens	Ones

There are 9 tens and 4 ones.

The number is

b)

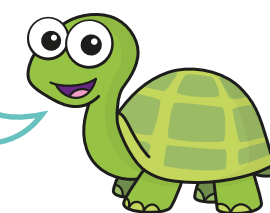
Tens	Ones

There are tens and ones.

The number is 75

- 6 Ron has some base 10
There are 3 ones and 6 tens.

Ron's number
is 63



Do you agree with Tiny? _____

Why?