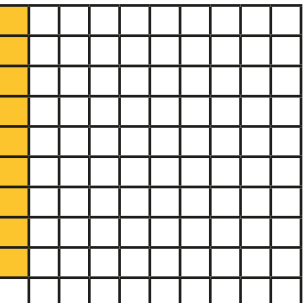
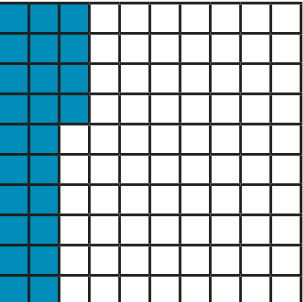


# Understand percentages

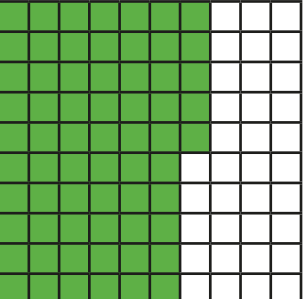
1 Complete the sentence for each hundred square.

a)  There are  parts out of a hundred shaded.

This is  %.

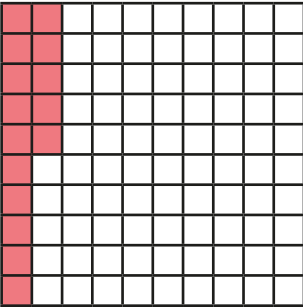
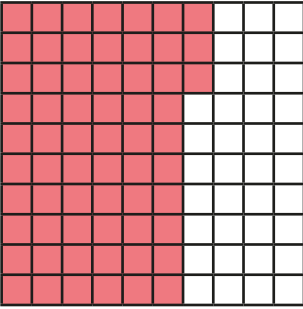
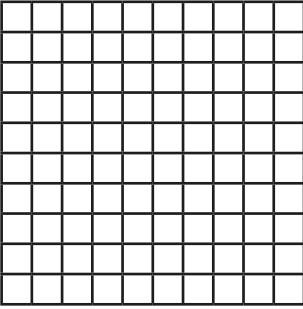
b)  There are  parts out of a hundred shaded.

This is  %.

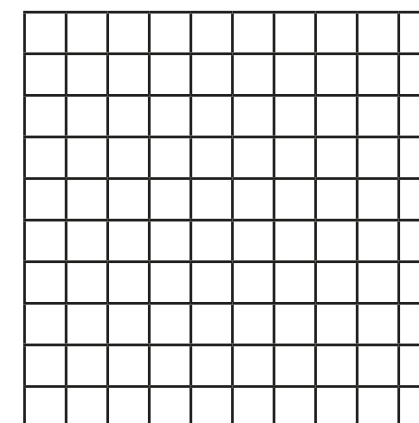
c)  There are  parts out of a hundred shaded.

This is  %.

2 Complete the table.

Hundred square	Percentage
	
	
	82%

3 Shade 15% of the hundred square red.  
Shade 32% of the hundred square blue.



What percentage of the hundred square is **not** shaded?  %

- 4 a) Is 1% of this bar model shaded? \_\_\_\_\_



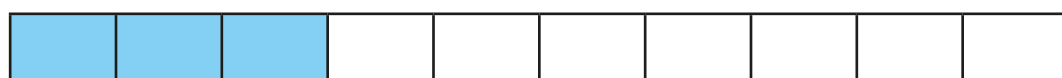
Explain your reasoning.

---



---

- b) What percentage of each bar model is shaded?



%



%

- 5 Passengers are boarding a plane.

The plane has 100 seats.

- a) 10% of the seats are already full.

How many passengers are already on the plane?

- b) 15% of the seats have not been booked.

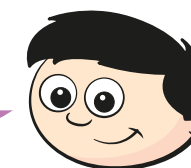
How many seats have been booked?

- c) How many passengers still need to board the plane?

- 6 Dexter has £1 to spend.  
He buys some stickers.



I got 35p change.



What percentage of his money did Dexter spend?

%

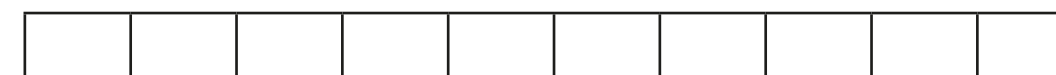
- 7 Aisha and Brett have been selling tickets for the school play.

There are 100 tickets.

- On Monday they sold 34% of the tickets.
- On Tuesday they sold 42 tickets.
- By the end of Wednesday, 95% of the tickets had been sold.

How many tickets did they sell on Wednesday?

- 8 Shade 85% of the bar model.



Compare answers with a partner.

