

Setup Instructions

Protected View

Usually when downloading a PowerPoint/Word/Excel file from the Internet, the file will open up in Protected View so that you cannot edit the document accidentally.

This actually stops the scoring system in the game from working as the PowerPoint is 'edited' by the scores when they change.

Make sure that you click on the 'Enable Editing' button first so that the game does not load up in Protected View (top red circle.) Then you can launch the game as you normally would launch a presentation (bottom red circle.)



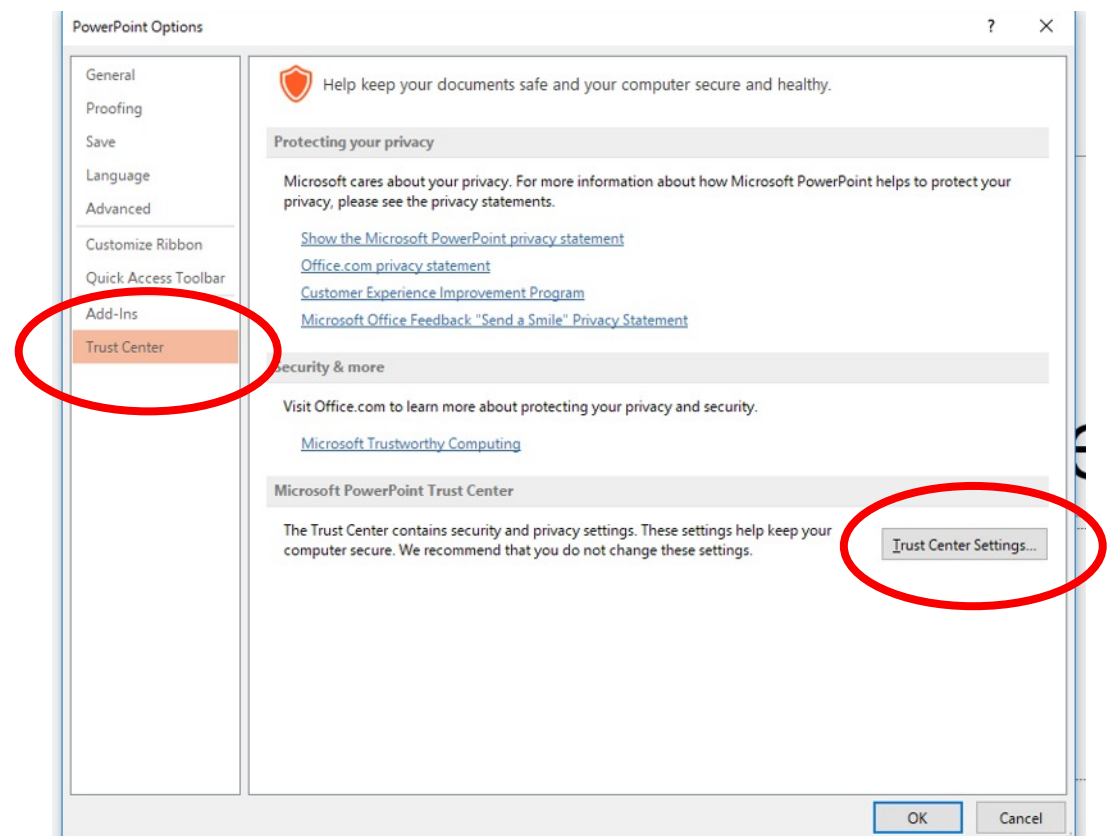
Enabling Macros

Simply put, macros are code that allows certain created functions to work. In this case, it is to manage the score within the game.

To enable macros

Open up the PowerPoint, make sure Enable Editing has been done as per the step above, click on 'File', then 'Options' down at the bottom.

Then select 'Trust Center' and then 'Trust Center Settings' (see picture right)



Then click on 'Macro Settings' and check the 'Enable' box.

This should now allow the scoring to work properly.

The score will reset when you close it so long as it is not saved. If prompted to save, click 'Do not save.' Pupils should be reminded not to save when they exit.

